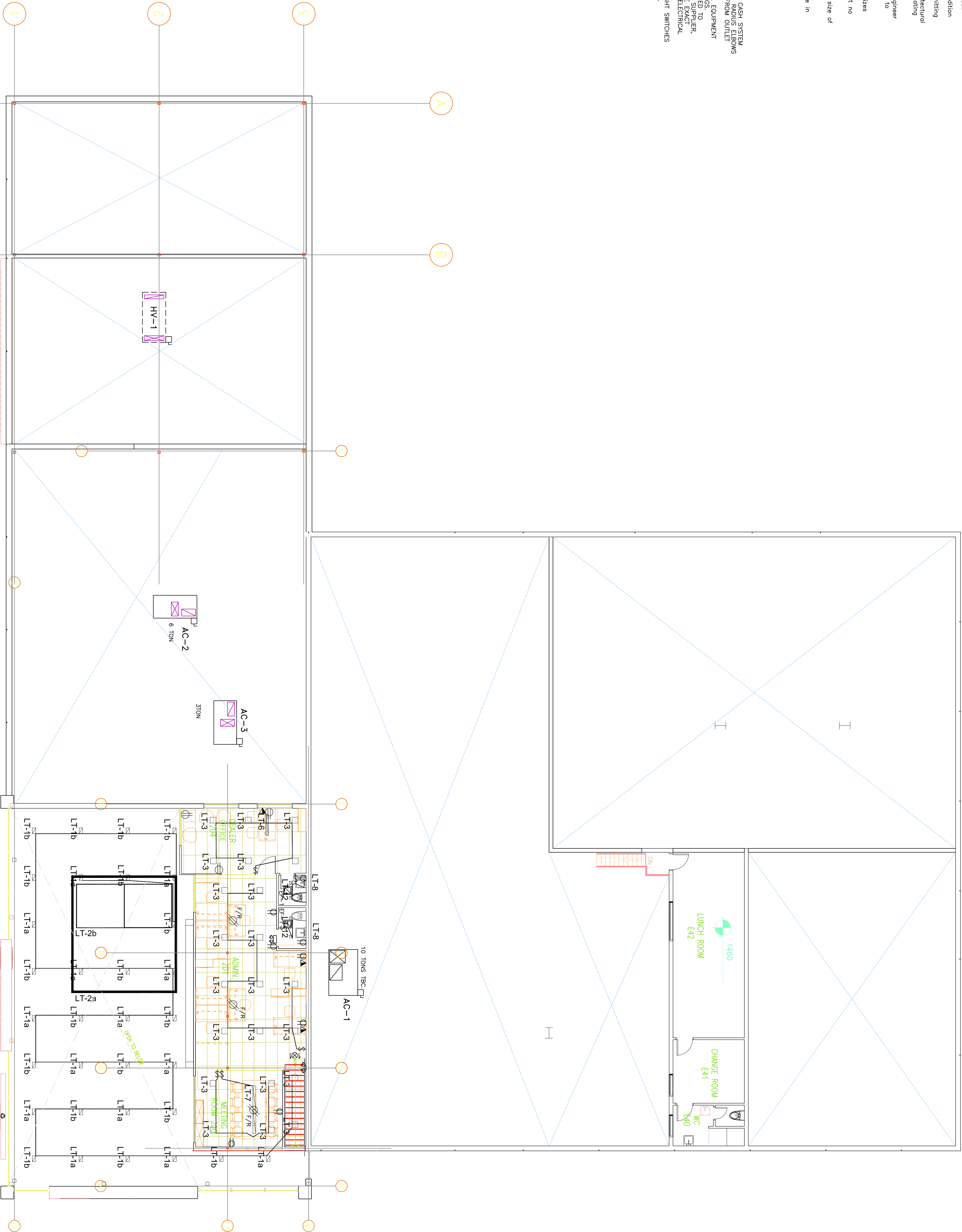


Typical Electrical Notes:

1. All dimensions and conditions must be verified on site.
2. Reproduction of this drawing is not permitted without the written consent of EVEREST ENGINEERING LIMITED.
3. Drawings are not to be used for construction or pricing unless signed by the Engineer and labelled "ISSUED FOR CONSTRUCTION".
4. All materials, workmanship and equipment used by electrical contractor shall meet the approval of the engineer and shall be installed in accordance with the requirements of the local municipality and the latest edition of the Canadian Electrical Code.
5. Electrical contractor to review all mechanical architectural drawings and be responsible for coordinating with other trades.
6. All materials, workmanship and equipment used by electrical contractor shall meet the approval of the engineer and shall be installed in accordance with the requirements of the local municipality and the latest edition of the Canadian Electrical Code.
7. Electrical contractor to verify the location of all existing and/or owner at no extra cost to project.
8. Electrical contractor to ensure that all wire/cable sizes are in accordance with the safety code in regards to ampacity, voltage drop, and short circuit capacity.
9. All wiring to be copper with smallest permissible size of 14 AWG for 15 amp branch circuits.
10. Obtain permit and pay all fees for inspections.
11. In no case will exposed wire/conduit be acceptable in finished areas.

ADDITIONAL NOTES:

1. PROVIDE A 1"ø CONDUIT WITH NILON PULLCORD FOR CASH SYSTEM OUTLETS BACK TO TELEPHONE BACKBOARD. USE LONG RADIUS ELBOWS.
2. PROVIDE A 3/4"ø CONDUIT WITH NILON PULLCORD FROM OUTLET TO ELECTRICAL PANELS.
3. CONTRACTOR TO COORDINATE EXACT LOCATION OF ALL EQUIPMENT WITH ARCHITECTURAL AND KITCHEN EQUIPMENT DRAWINGS TO AVOID CONFLICTS.
4. COORDINATE ALL WORK WITH THE KITCHEN EQUIPMENT SUPPLIER, AND MECHANICAL CONTRACTOR AND SHALL COORDINATE EXACT VOLTAGE, AMPERAGE, MOUNTING HEIGHT AND TYPE OF ELECTRICAL EQUIPMENT TO BE INSTALLED.
5. TO INDICATE THEIR USE AS SHOWN ON THE DRAWINGS.

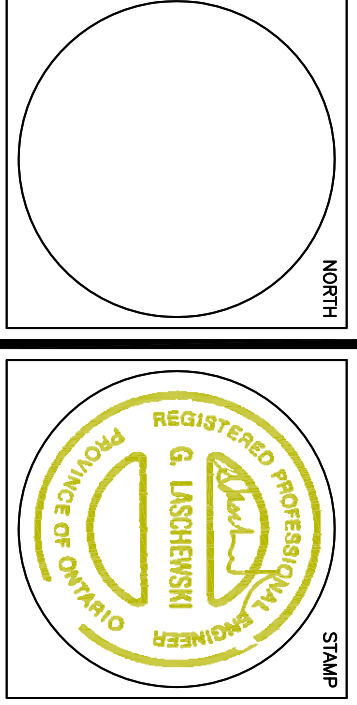


Note:
1. All dimensions and conditions must be verified on site.

2. Reproduction of this drawing is not permitted without the written consent of EVEREST ENGINEERING LIMITED.

3. Drawings are not to be used for construction or pricing unless signed by the Engineer and labelled "ISSUED FOR CONSTRUCTION".

4	REVISED TO MATCH ARCHITECT	MAR 25/25
3	ISSUED FOR PRICING	OCT 11/24
1	ISSUED FOR BUILDING PERMIT	OCT 18/23
0	PRELIMINARY REVIEW	APRIL 2023
NO.	REVISION/ISSUE	DATE



PROJECT
Bytek Volkswagen
1325 St Laurent Blvd,
Renovation
OTTAWA — ONTARIO

SCALE 1:100	DRAWN BY C.V.A.
ISSUED	CHECKED BY C.L.
DATE MAR. 2023	PROJECT NO.

DRAWING NUMBER	REV. NO.
E-3	OF 4

TITLE
SECOND FLOOR PLAN